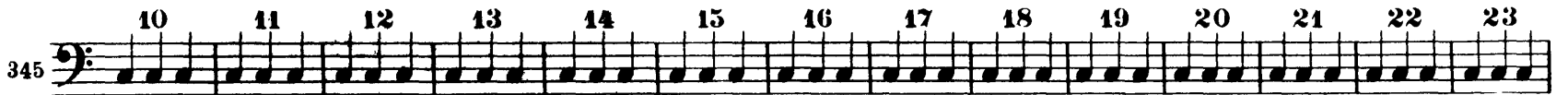




Beethoven — Symphony No. 5  
TIMPANI in C.G

345 10 11 12 13 14 15 16 17 18 19 20 21 22 23



359 24 25 26 27 28 29 30 1 2 3 4 5 6 7 8



*cresc.* - - - *attacca*

Allegro (♩ = 84)

374 *ff*



383



391 3 A 2 1



407 7 2 7



Bassi *f* 3 3 3

431 B 6 Tromb. 1 1 *più f*



*ff* *f*

453 1. 2. 21 C 5



*ff* *tr* Viol. II

487 3 3 3 *più f* 3 3



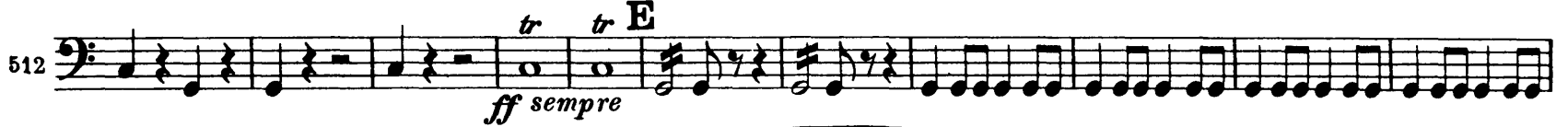
*f*

499 1 2 D 1 1 *ff*



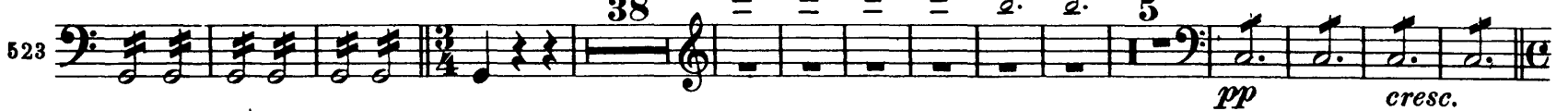
*tr tr E*

512 *ff sempre*



Tempo I (♩ = 96)

523 38 Fl. 5 *pp* *cresc.*



Fl. *pp* *cresc.*

Allegro (♩ = 84)

538 50 *ff*



550 587



587 595 5



# Jean Sibelius Finlandia, Op. 26

Pauken

in A  
Andante sostenuto

Basso

1 2 3 4 2

*ff ff ff < fz*

12 *ff < fz ff dim. p* muta in Es, As. *f > p* 13 14 *f* Vel.

45 *dim. f dim. f dim. ff dim.*

70 *ff dim. f sempre f* D Allegro moderato

81 *poco a poco cresc. mf sempre cresc. dim.* E

95 *p fz cresc. molto fz fz ff* F

102 *f f f ff*

108 G

112 *f cresc. p cresc. ff poco dim.*

123 *mf cresc. p cresc. molto ff dim. - - pp* H I 15

# STAR WARS

(Main Title)

TIMPANI

JOHN WILLIAMS

Transcribed for Band by Stephen Bulla

**Maestoso**

**A tempo (L'istesso)** (♩ = ♩)

6 *sfz*

12 *f poco rall.*

16 *mf poco rall. < a tempo*

20 *f*

38 *f*

41 *f*

46 *f*

54 *mf cresc.*

56 *mf*

59 *f > p poco rall.*

68 **Poco Meno**

74 *sfz*

82 *mf < ff*

83 **With Great Force**

*molto rall. < e cresc.*

# The Stars and Stripes Forever

## March

JOHN PHILIP SOUSA

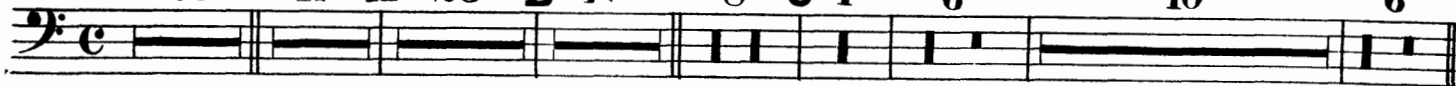
The image displays a musical score for the march 'The Stars and Stripes Forever' by John Philip Sousa. The score is written on ten staves of music. The first staff begins with a treble clef, a key signature of one flat (B-flat), and a 2/4 time signature. The music is marked with a forte dynamic (*ff*). The score includes various musical notations such as slurs, accents, and dynamic markings. A 'Trio' section is indicated by a double bar line and the word 'Trio' above the staff. The score concludes with a first ending bracket and a second ending bracket, both leading to a final double bar line. The overall style is characteristic of early 20th-century American march music.

Peter Ilyich Tchaikovsky  
Romeo and Juliet, Fantasy Overture

**Piatti e Gran Cassa.**

Andante non tanto quasi Moderato. *string.* Allegro. Molto meno mosso. *string.*

20 17 A 23 B 17 8 C 4 6 10 6



**Allegro giusto.**

D 21 E Piatti



10

*mf*

*ff*



4

F Gr. Cassa

*ff*

22

G

21

H

38



J

30

K

27

L

20

M

11

N

*ff*

1

1



*ff*



*ff*

*ff*

O



*ff*

*ff*



4

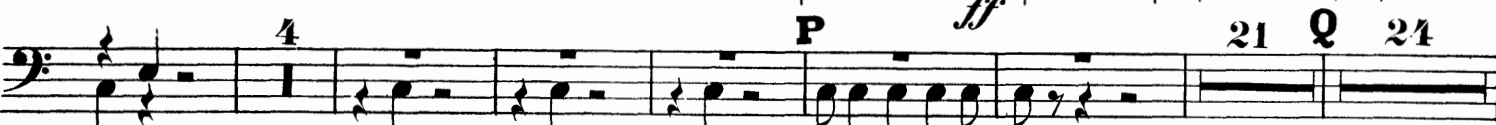
P

*ff*

21

Q

24



1

2

3

4

5

6

1

R

22

*f*

1

*f*

2



S

5

*f*

*f*

5



*ff*

1



*ff*

12

Moderato assai.

U

